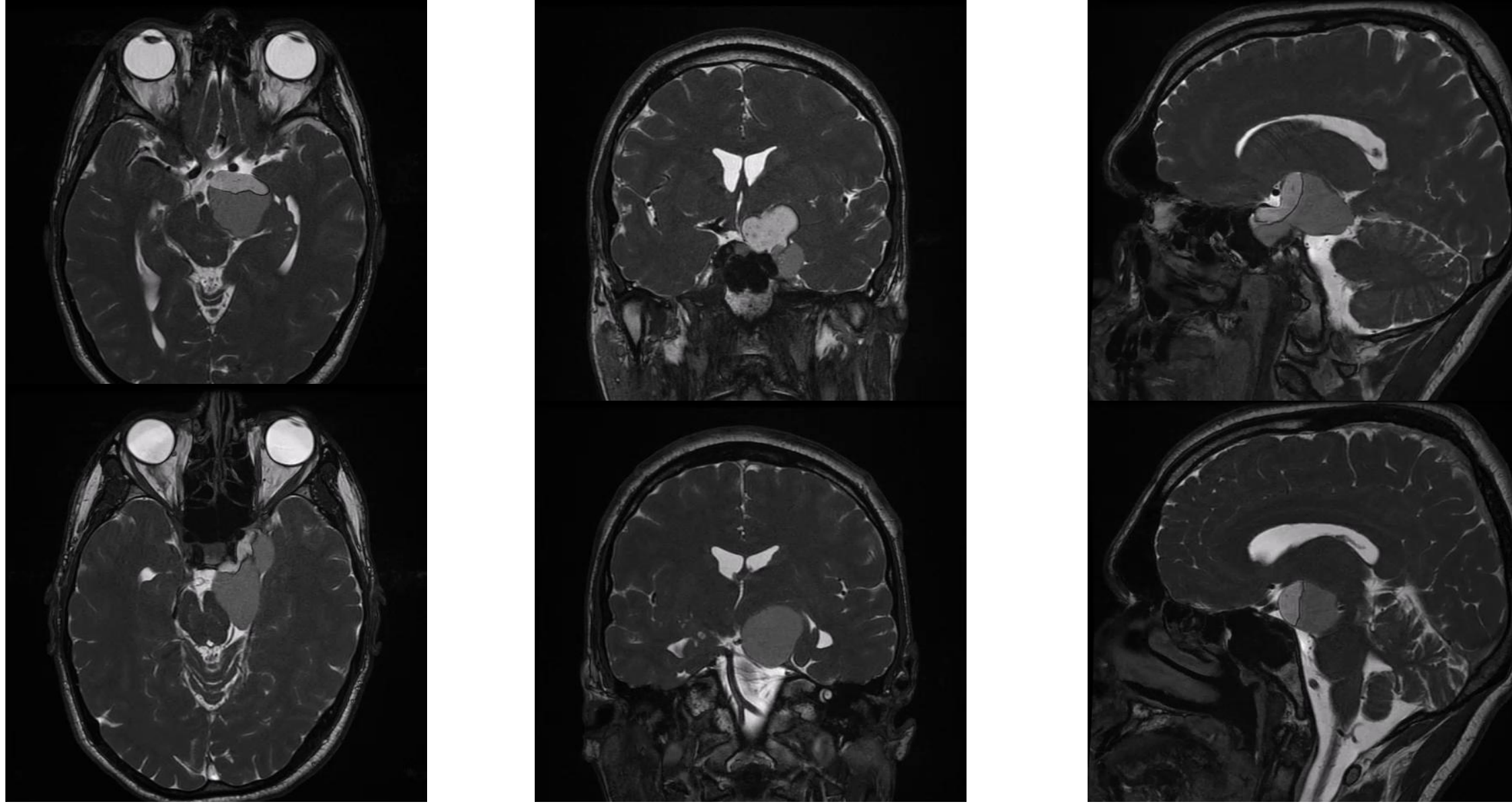


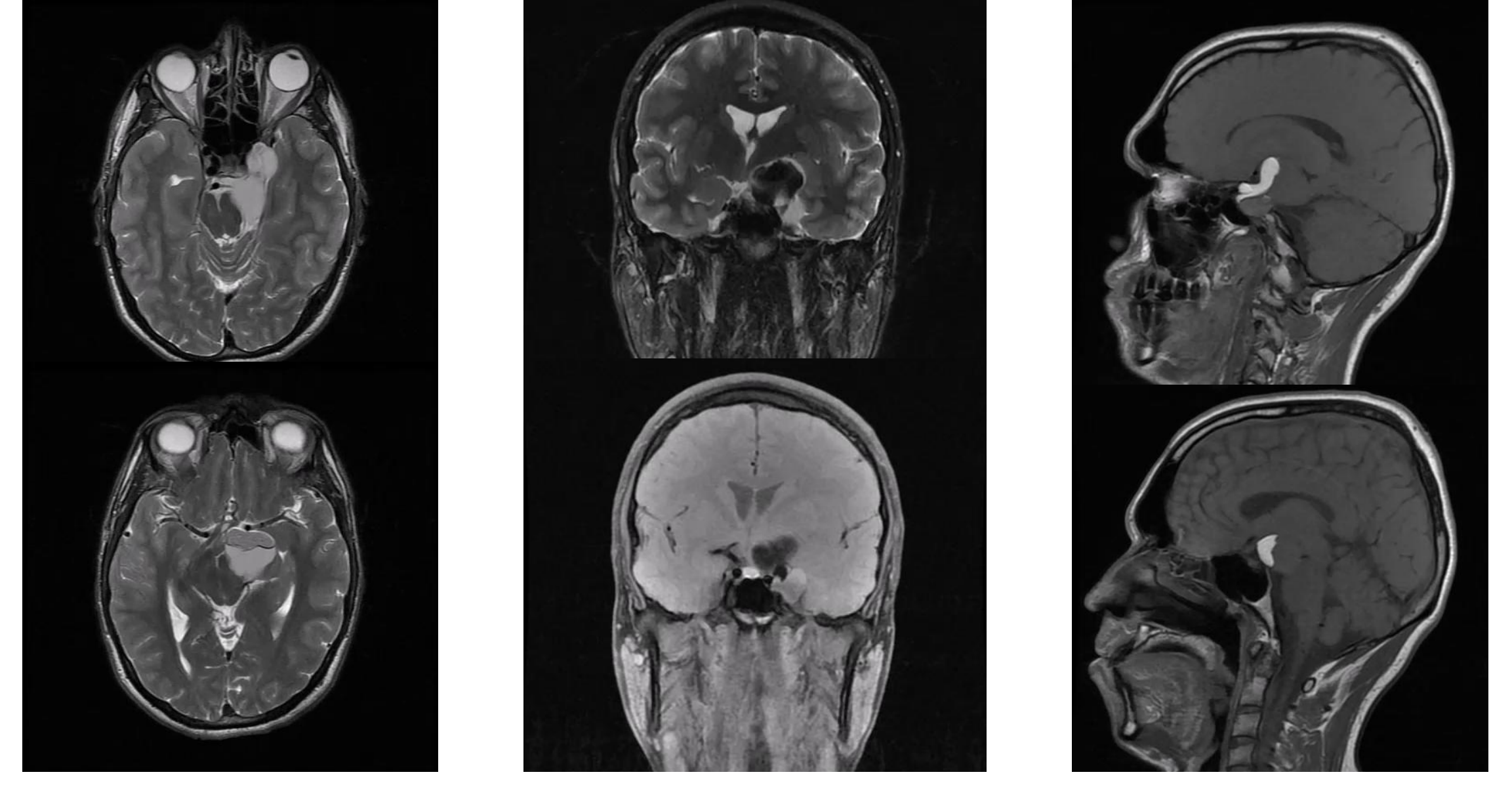
## Case presentation

- A 24-years old male with a 1-year history of the left side headache and left eyeball pain
- Clinical presentation with a left side CN III palsy
- No other

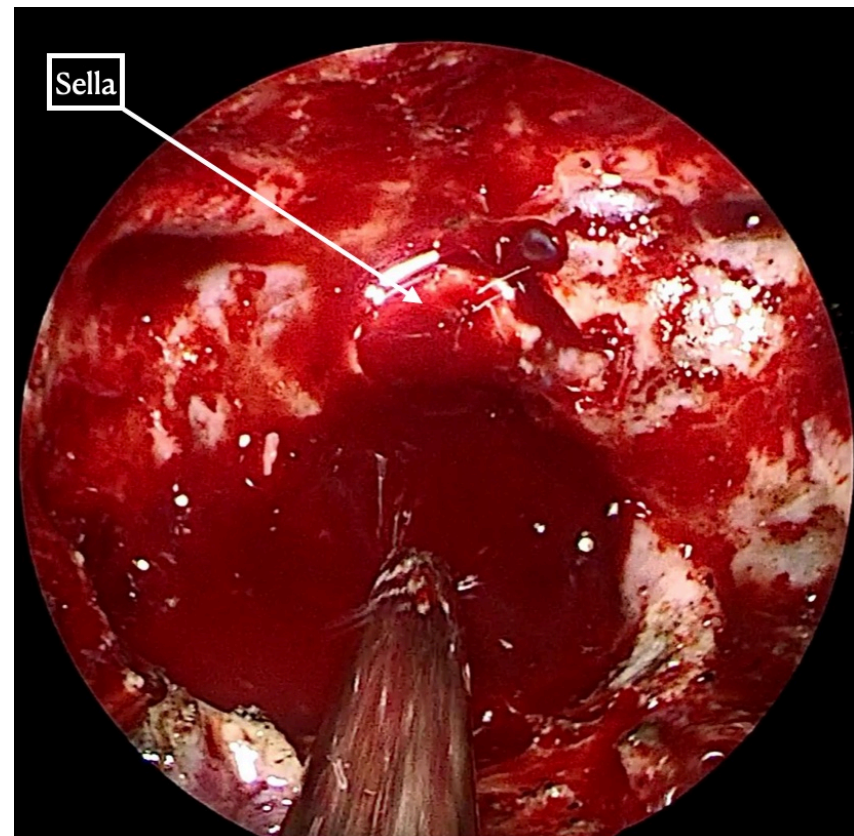
### Pre Operative MRI



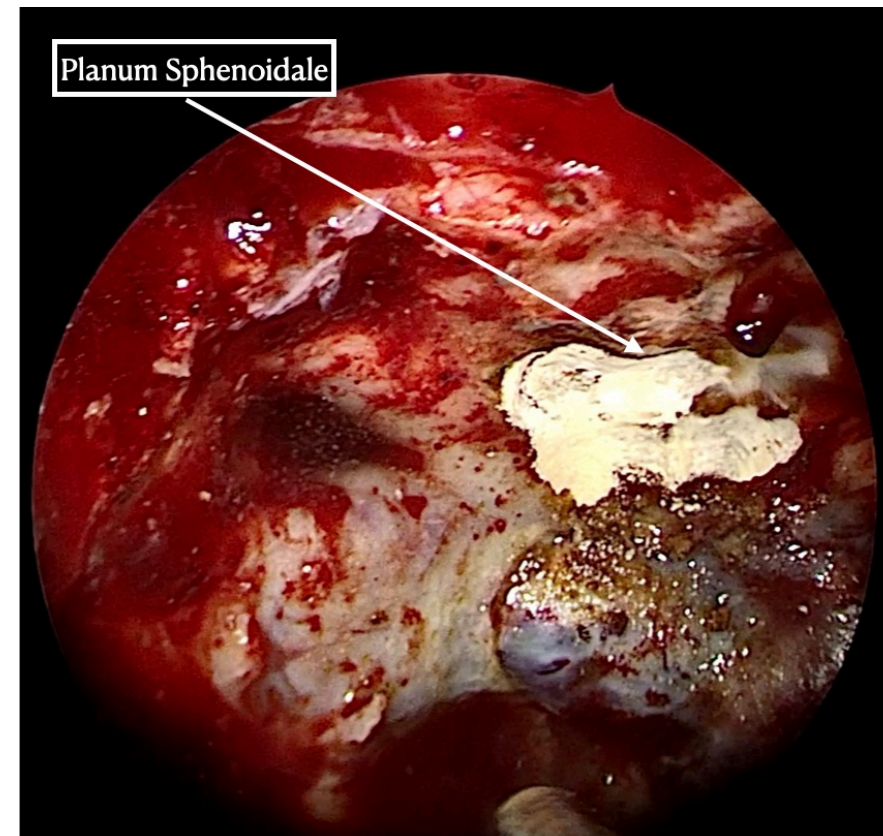
### Pre Operative MRI



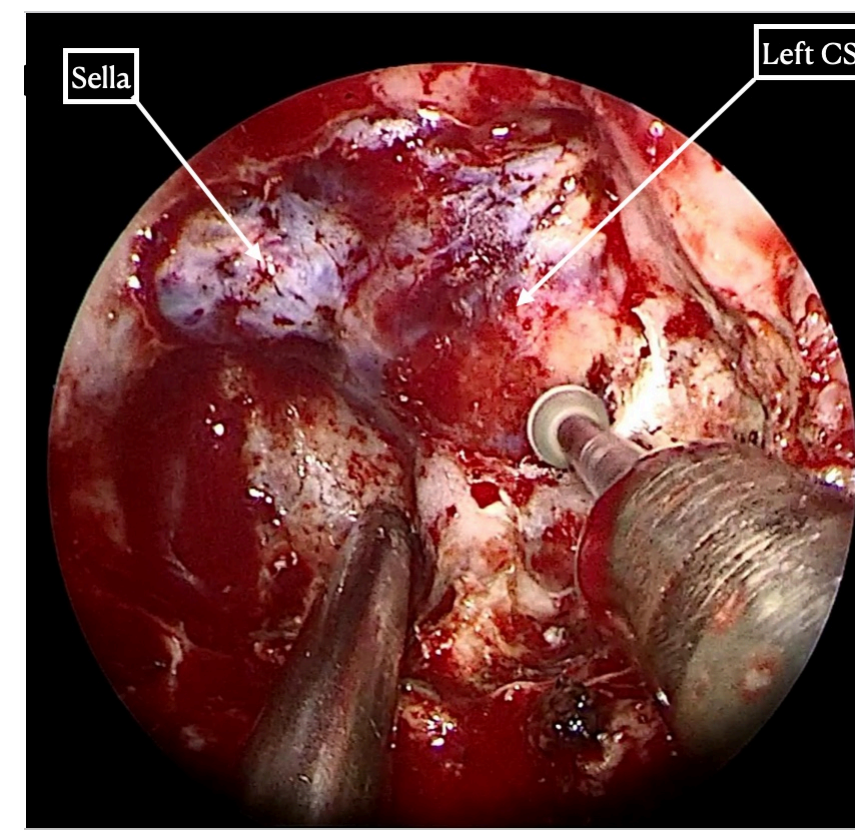
### Intraoperative Pictures



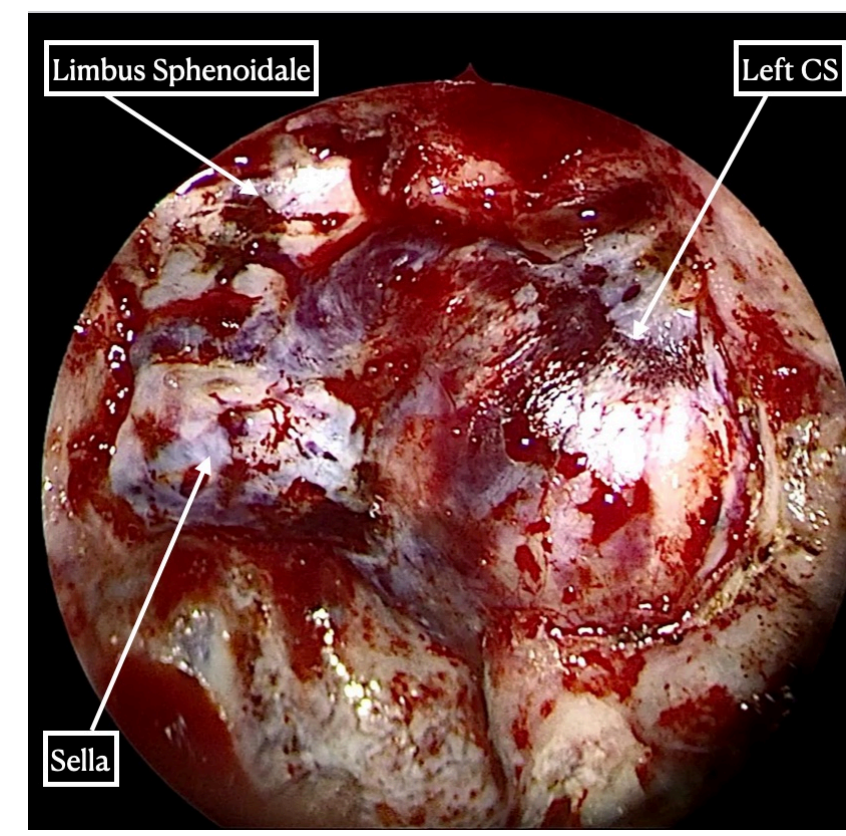
Transsellar Approach



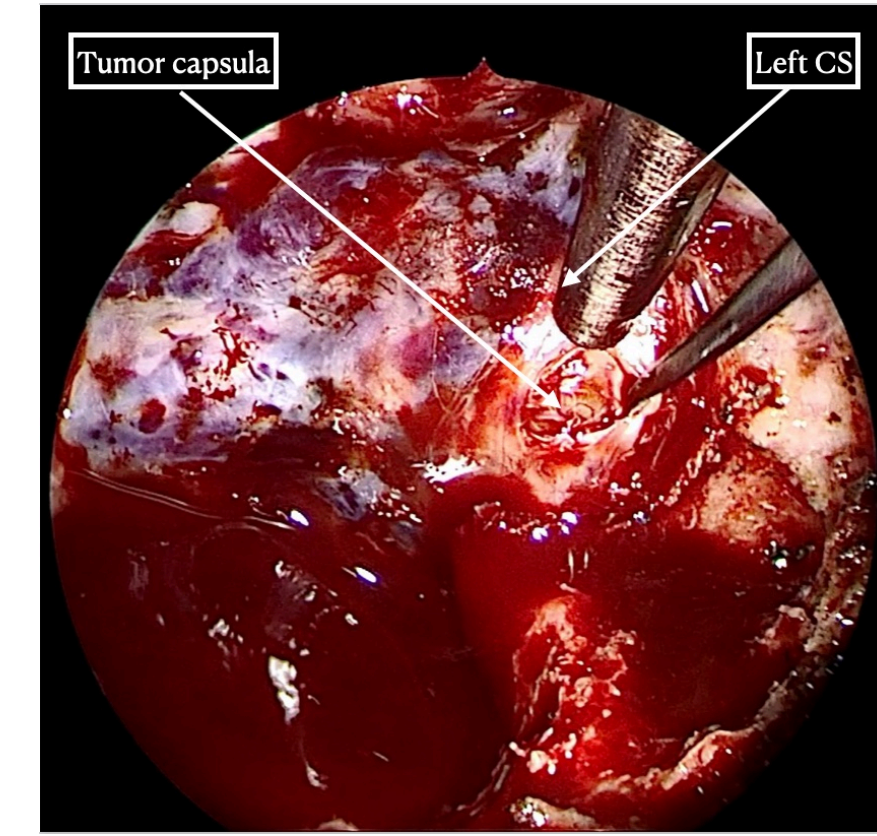
Transplanum Approach



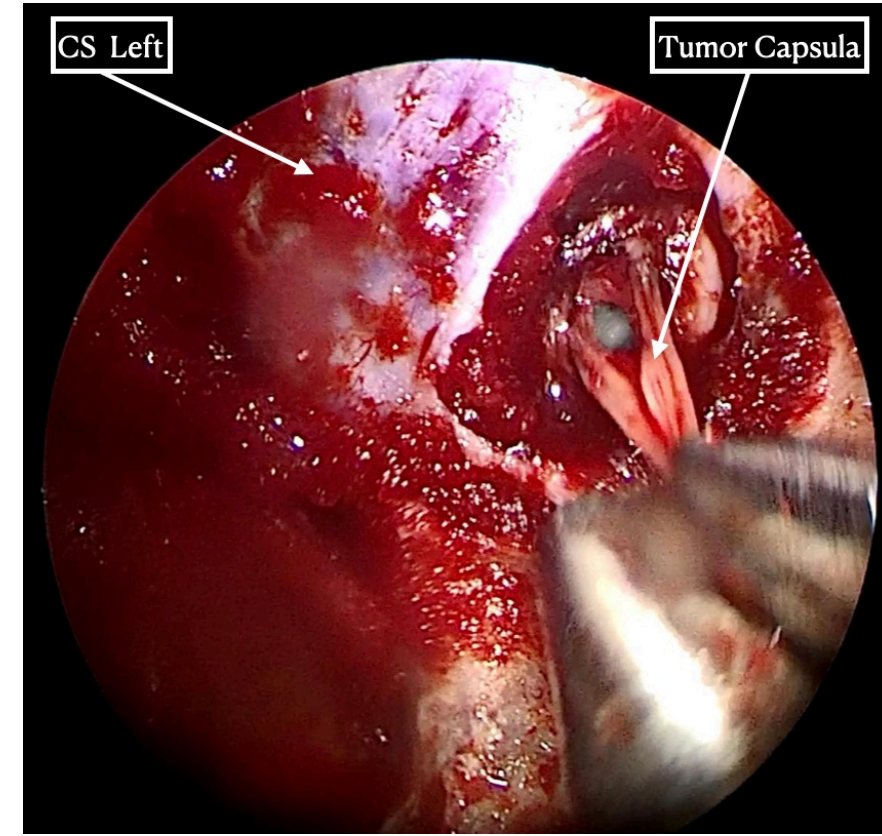
Unroofing anterior wall of the CS (left side)



After bone removal

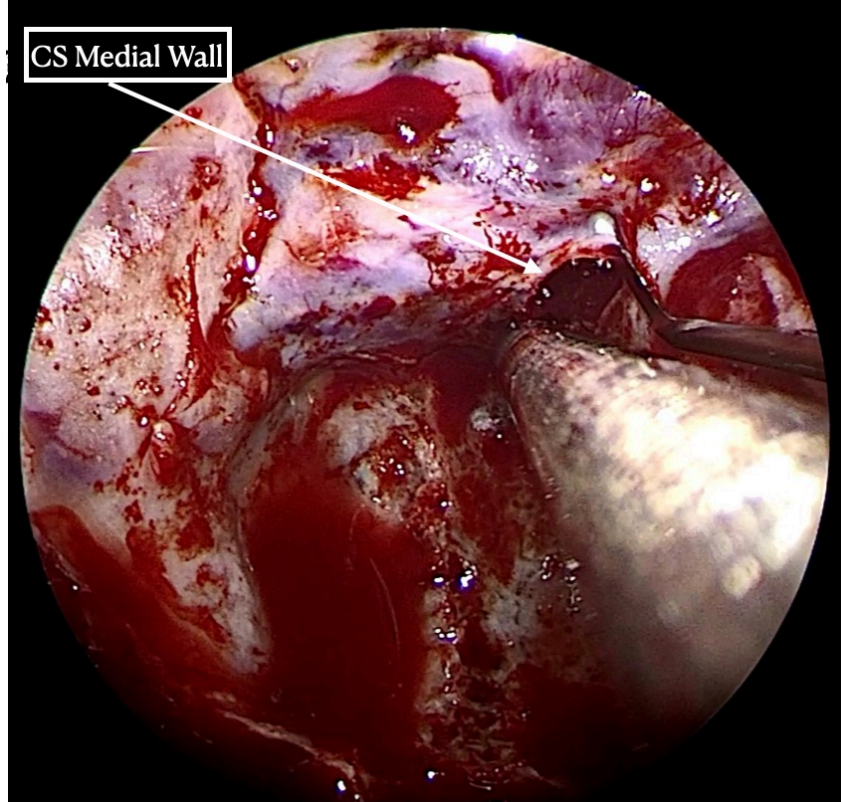


Opening Dura Lateral to ICA, (left side)

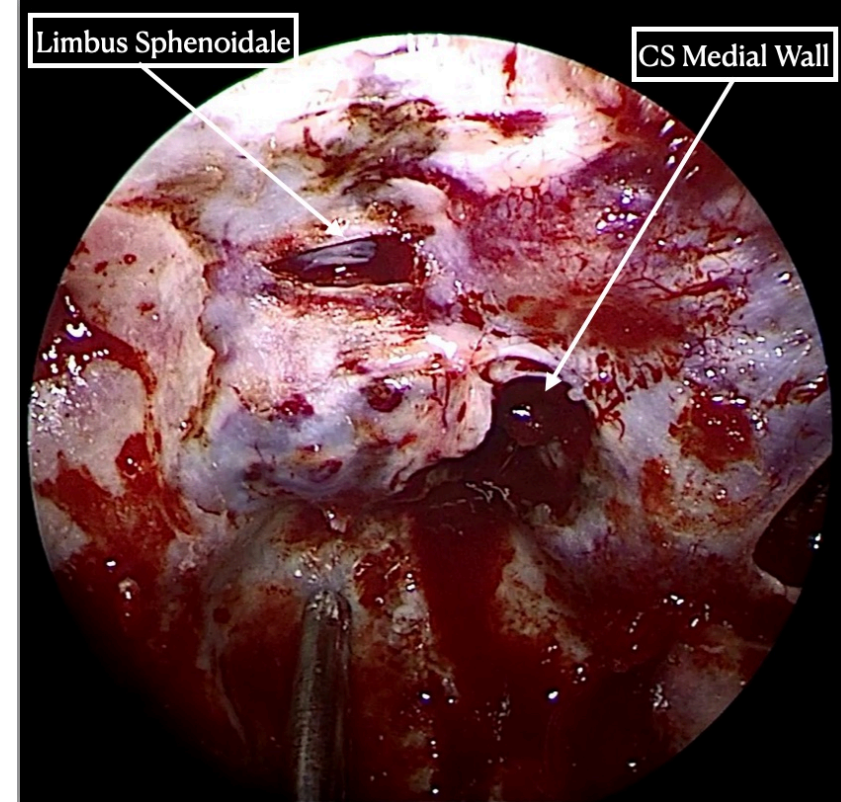


Removing Tumor Capsula Lateral to the Left ICA

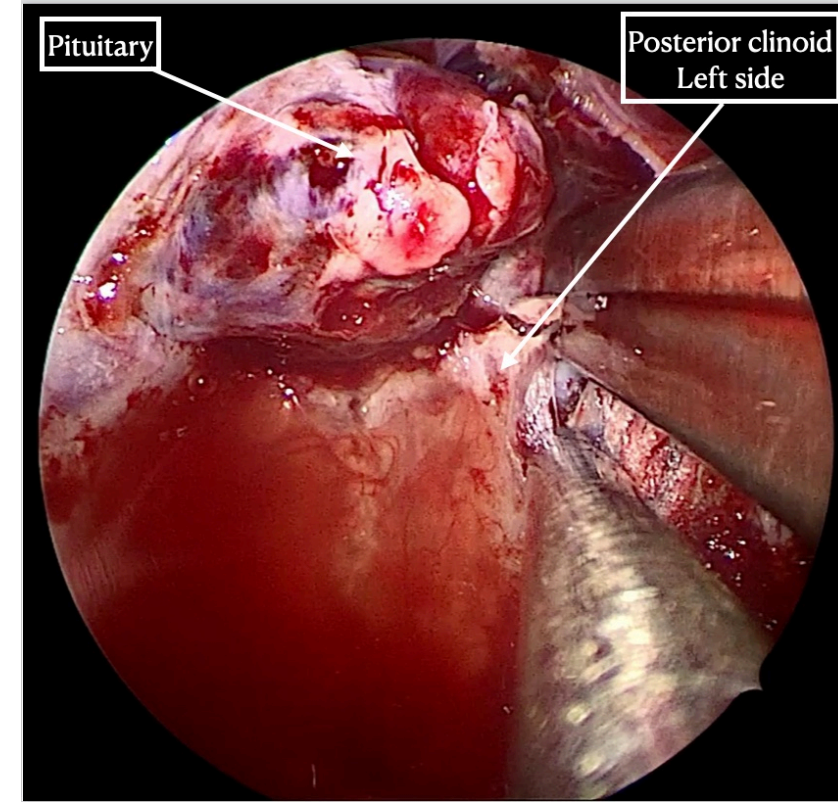
### Intraoperative Pictures



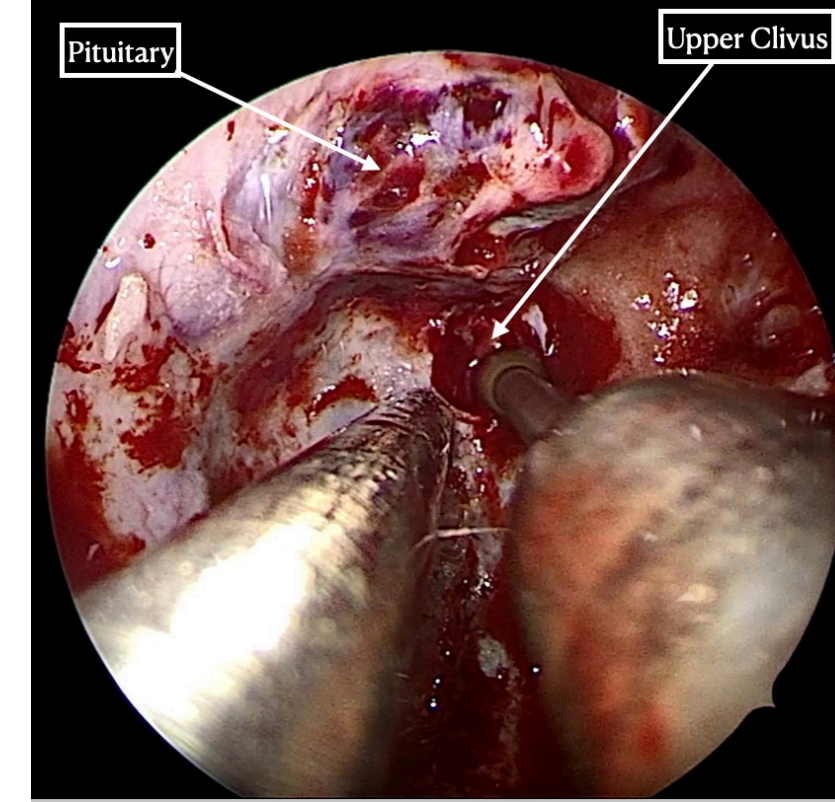
Opening Medial Wall of the CS, Left Side



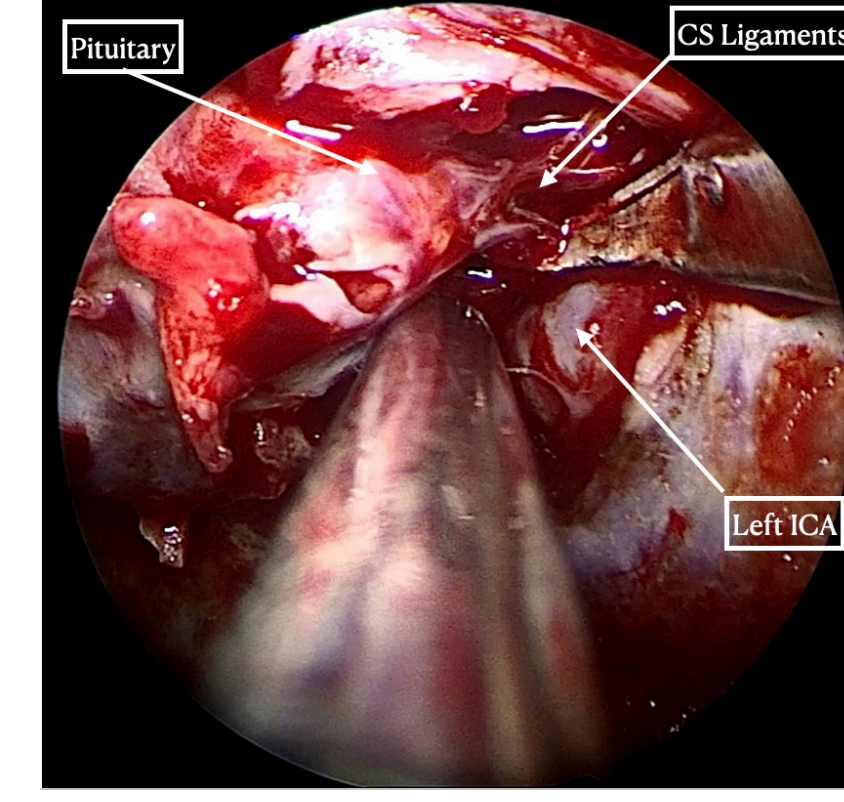
After opening Dura



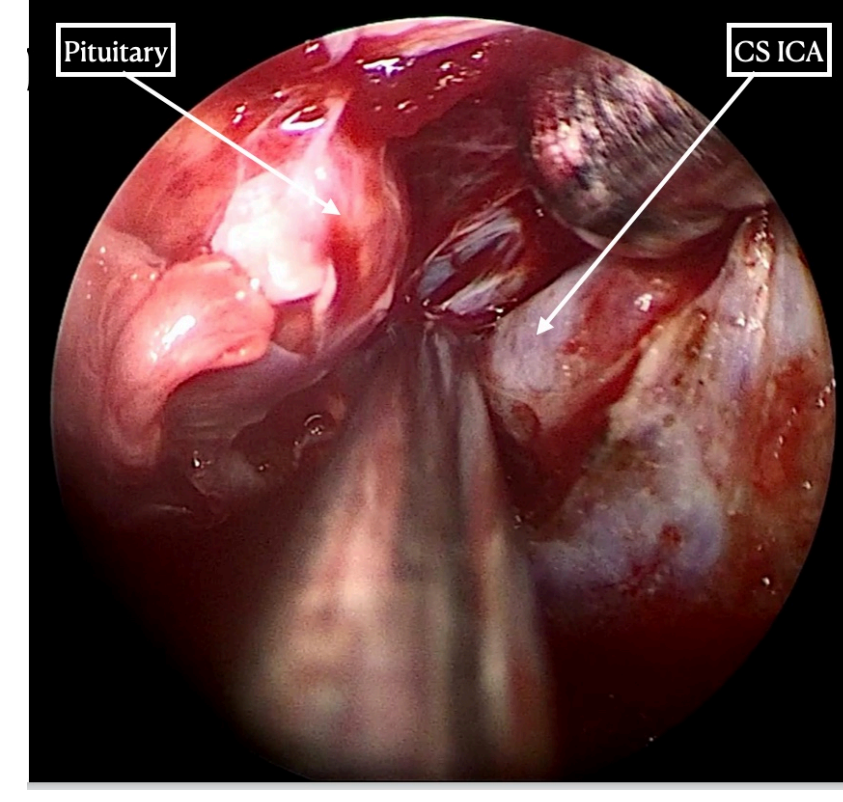
Removing Posterior Clinoid (left side)



Drilling Upper Clival (left side)

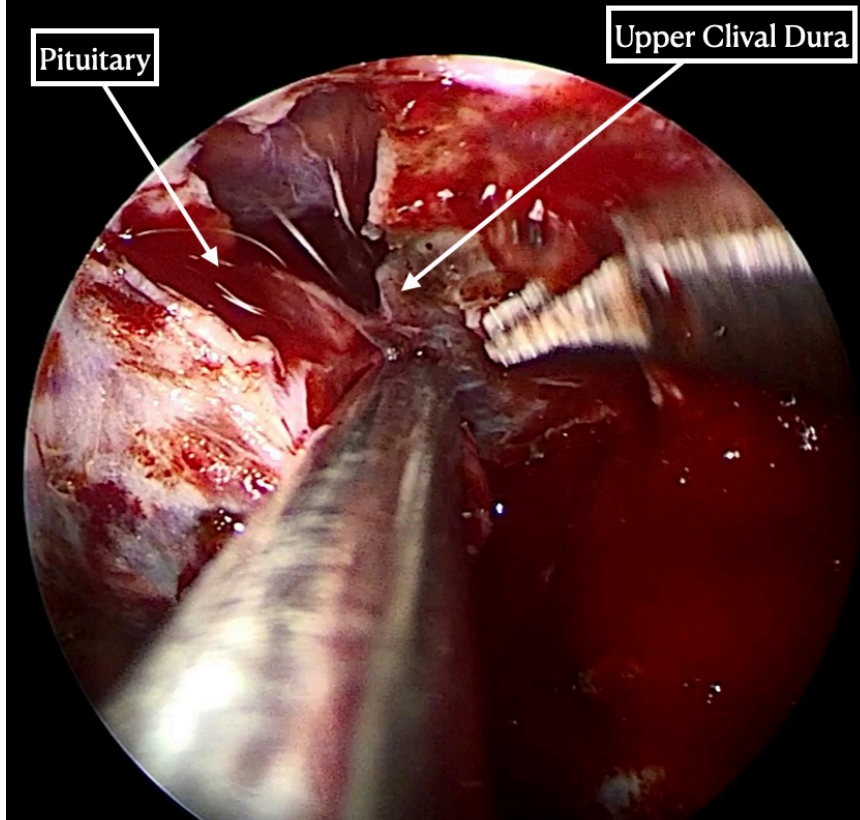


Transcavernous Approach (left side)

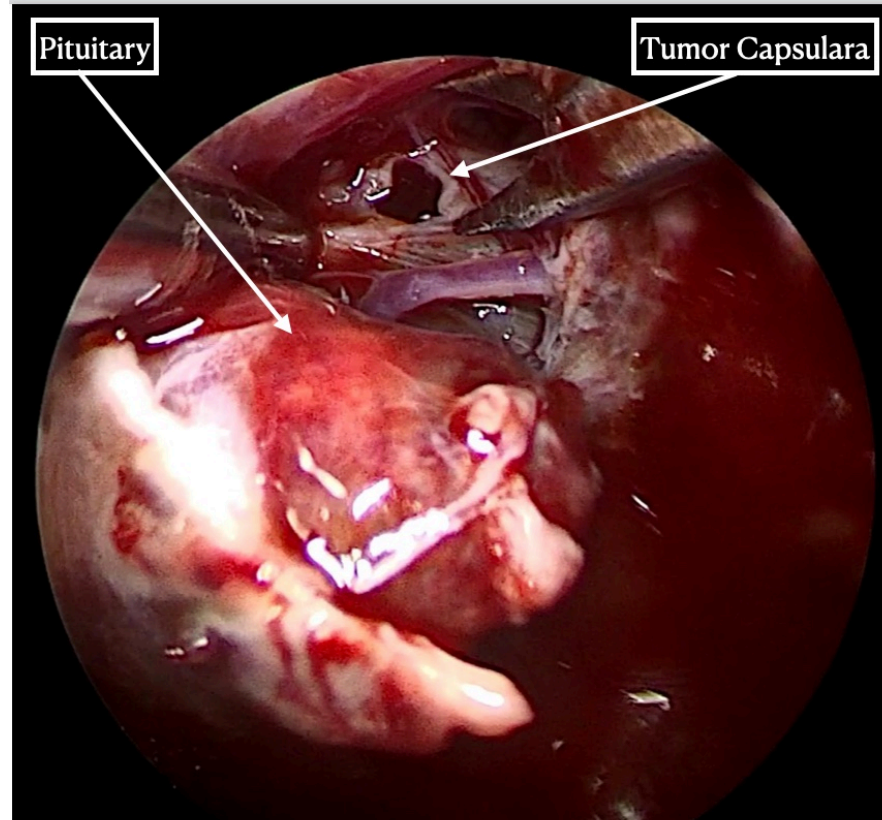


Transcavernous Approach (left side)

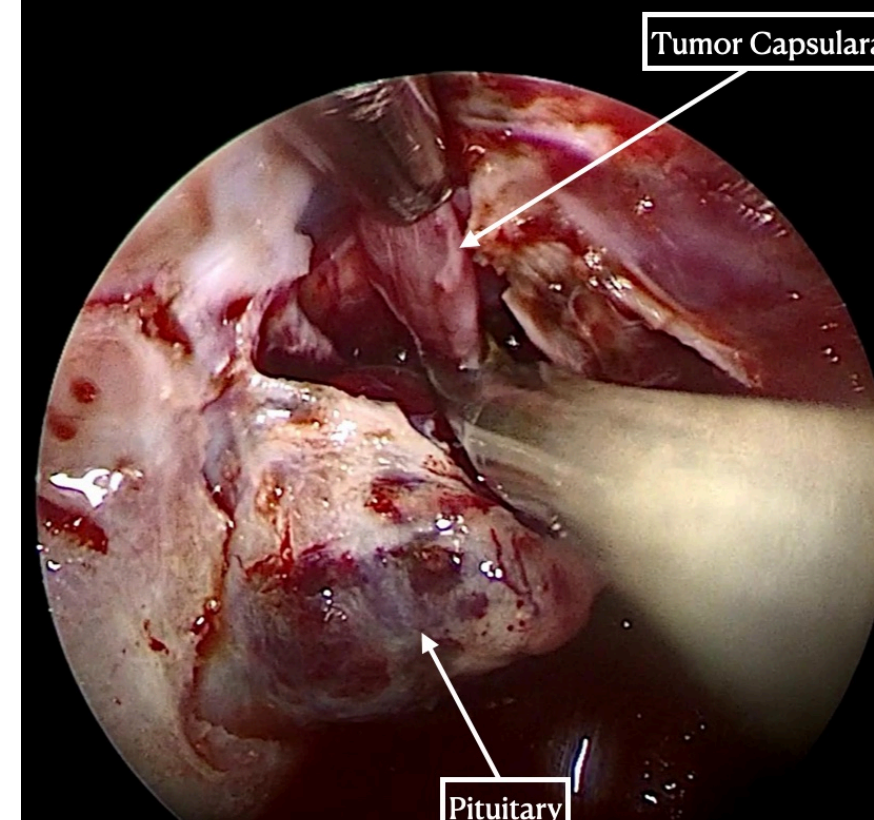
### Intraoperative Pictures



Hemihypophysis Transposition (left side)

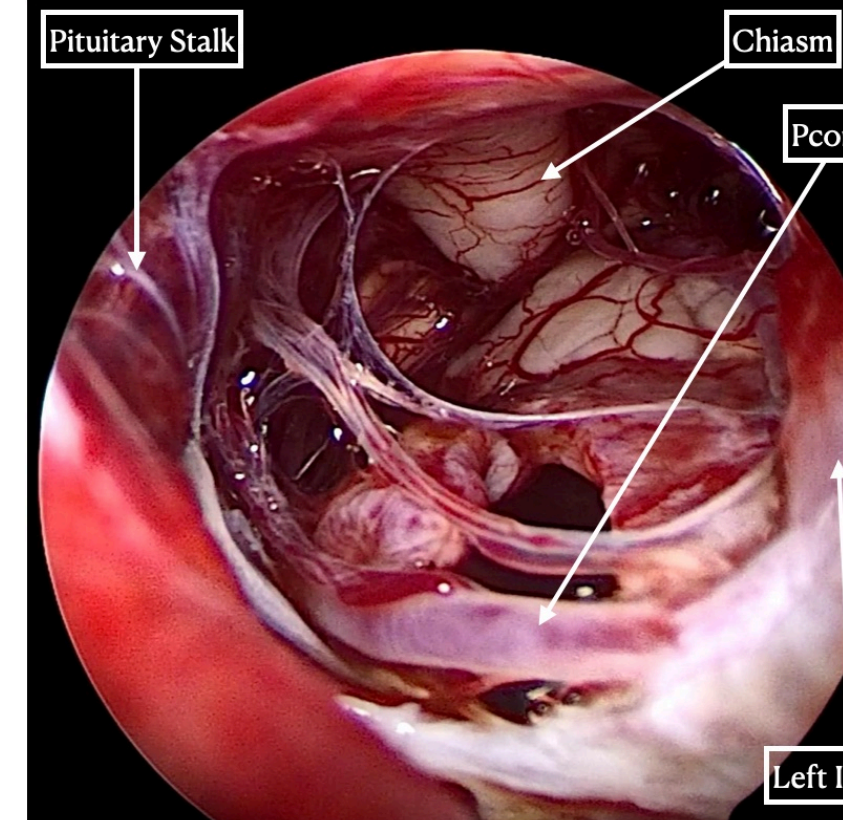


Opening Tumor Capsula

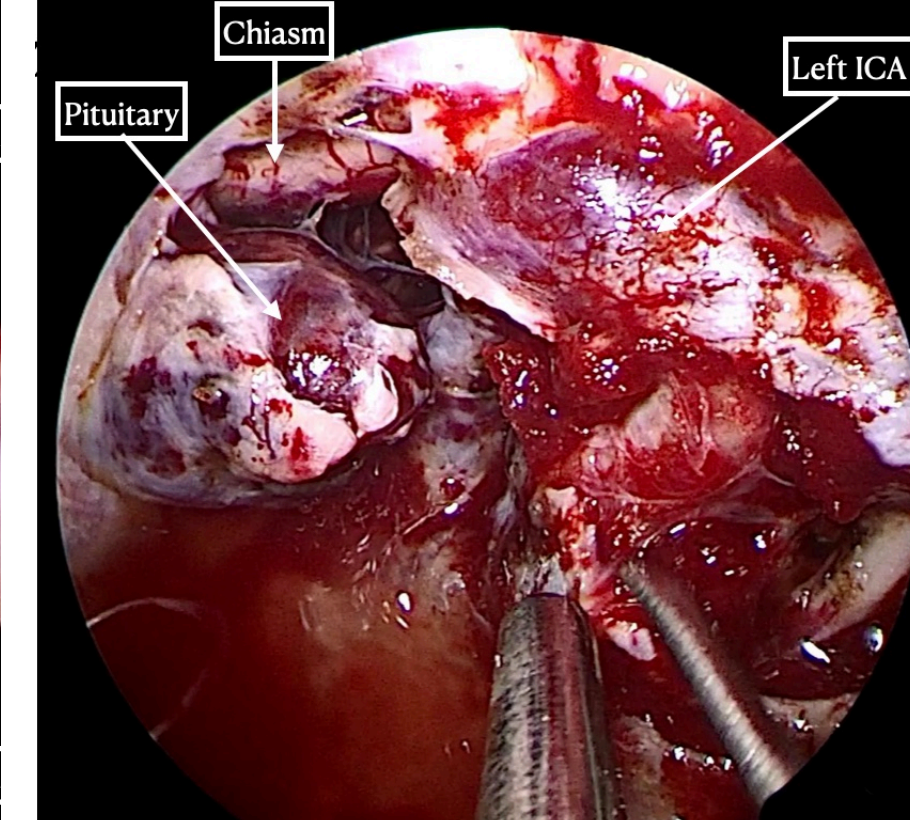


Tumor Capsula Removal

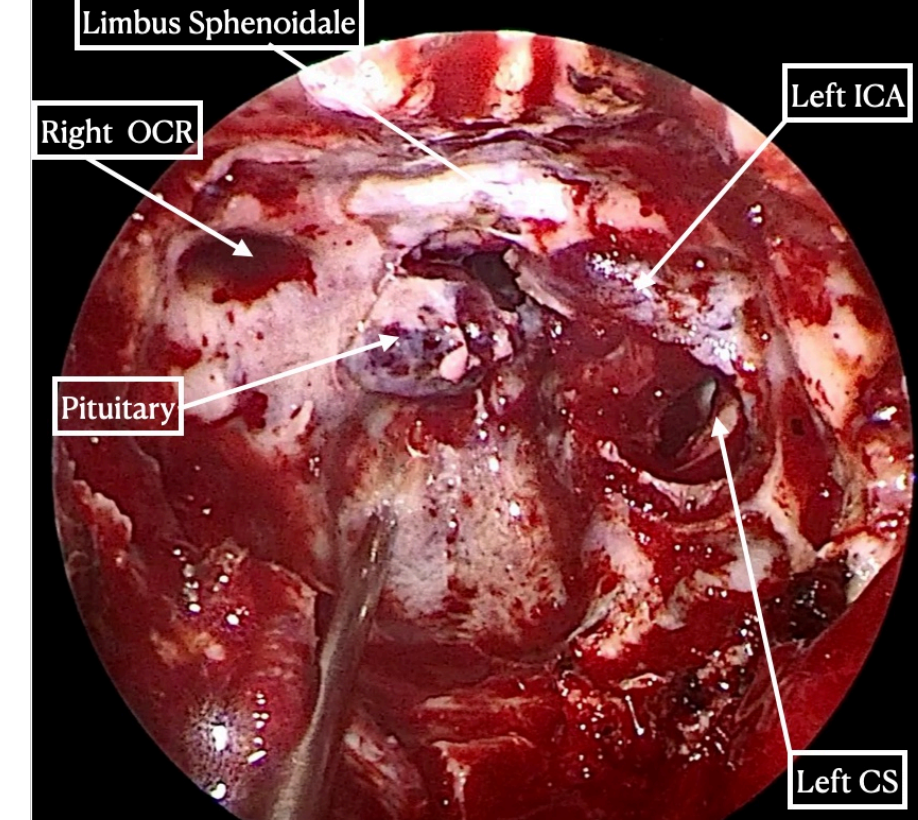
### Intraoperative Pictures



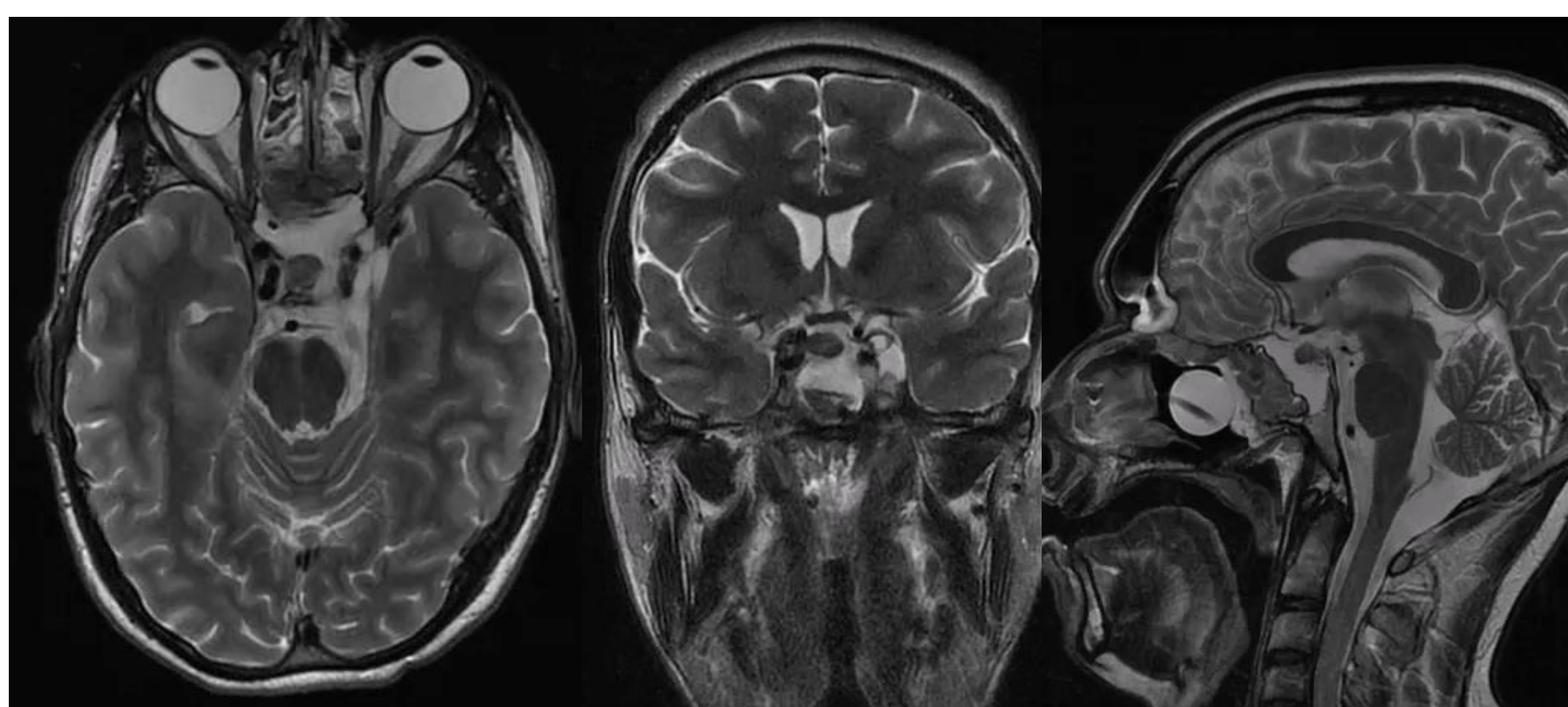
Final View



Final View



### Post Operative MRI



### Post Operative Course

- Left side headache and left eyeball pain resolved
- CN III palsy recovered
- Patient developed a transient CN VI palsy which completely resolved 3 months later
- No CSF-leak or endocrinological impairment was observed

### Final Pathology

Neuroenteric Cyst